



Świętokrzyskie take it slow!

camping / camperpark / campsite

Poland



The Świętokrzyskie region impresses visitors with its interesting nature, history, magnificent monuments of art and architecture, priceless archaeological and geological monuments, the oldest industrial traditions in Poland, folklore, and tradition. Low but old mountains, golden fields, green forests, blue lakes and rivers, gifts of nature used for healing as well as cultural heritage make up the rich offer of the Świętokrzyskie region.

The region is an "open-air geological paradise", as can be observed in the UNESCO-listed Świętokrzyskie Geopark and on the Świętokrzyskie Archeogeological Trail. Such attractions help you feel and understand the hidden secrets of our planet. Since the dawn of time, people have been able to appreciate this wealth of nature and use it skilfully. This is evidenced by the

perfectly preserved striped flint mines at Krzemionki. Flint was once needed to light fires - today it is known as the "stone of optimism" and decorates the necks of many celebrities. The beautiful Sandomierz is the capital of this gemstone, which invites you to visit with the atmosphere of a small historic town, the sweet taste of fruit and excellent wine produced in local vineyards.

The atmosphere of mystery is intensified by Łysa Góra mountain, on top of which legendary witches' Sabbaths took place and where the Sanctuary of the Relic of the Holy Tree of the Cross is currently located. Situated within the Świętokrzyskie National Park, the monument is evidence of the region's abundant history. In the past, kings and noble families favoured this area and built their residences here. Examples include the monumental Krzyżo-



pór castle, which according to tradition, was built to resemble a calendar, and the majestic royal castle in Chęciny, which resembles a ship on a rock.

The nature of the region makes it possible for tourists to enjoy active rest all year round. In summer there are numerous hiking and cycling trails, and in winter perfectly prepared ski slopes. Those tired of hiking can take advantage of the extensive offer of agrotourism farms, where you can learn about folk traditions and regional cuisine.

For those who prefer to relax in the city, the province's capital, Kielce, offers the entertainment and the unforgettable atmosphere of the capital of the Świętokrzyskie Mountains. As many as four geological reserves await tourists, especially Kadzielnia with its beautiful amphitheatre. You can learn more abo-

ut the geology of Kielce and the surrounding area in an easy-to-understand way at the Geoeducation Centre in Wietrznia. On the other hand, be sure not to miss a walk through the historic Old Town, where the Castle Hill with the Cathedral Basilica and the former Kraków Bishops' Palace stand out.

The modern health resorts in Busko and Solec-Zdrój, as well as the numerous SPA facilities throughout the province, will perfectly regenerate your strength and satisfy the requirements of the most demanding guests. The rich offer of spa tourism is an inexhaustible source of physical and mental strength. Thanks to the healing power of the gifts of nature, combined with the modern sanatorium infrastructure in Busko-Zdrój or Solec-Zdrój, Świętokrzyskie is an ideal place to regenerate the body and recover.



Sandomierz Vineyard

Have you already had a chance to visit the new camper park on the grounds of the Sandomierz Vineyard?

This is the first vineyard in Poland with professional motorhome facilities. During your stay, you can take a paid tour of the vineyard and winery combined with wine and cheese tasting in Sandomierz.

FACILITIES:

- ▶ 12 power mains connection points and a service point (all on Camper System solutions)
- ▶ Paid visits to the vineyard and winery with wine and cheese tasting in Sandomierz

Looking forward to having you.

▶ Exact location - <https://goo.gl/maps/jUbqXFRKJa8ur7BW6>

▶ Map of all Camper System points - <https://www.campersystem.pl/mapa-punktow>

Exact location - 50° 44' 12.4" N 21° 45' 59.9" E



Browarny Camping

Browarny (Brewery) Camping – attractively situated in a historic landmark area, protected by the Office for the Preservation of Historical Monuments/Historia Preservation Officer, at the foot of the Sandomierz escarpment. Perfectly communicated with Sandomierz's Old Town - it takes only a few minutes on foot to get to the Old Town Square. Żwirki i Wigury Street forms part of the national road No 79 and 77 and, therefore, ensures convenient and easy access to the campsite. The total campsite area consists of 2.5 ha, 1.5 ha of which is allocated for camping and caravanning. The area is partly wooded, flat and predominantly grassy.

Our highly qualified staff assures the best service possible.

Browarny Camping is a camper-friendly place!

FACILITIES:

- ▶ camping space for up to 200 people
- ▶ seasonal tent and motorhome pitches (from 10 April to 31 October)
- ▶ year-round permanent accommodation in double and triple rooms
- ▶ modern sanitary facilities
- ▶ tourist kitchen
- ▶ Children's common room and playground
- ▶ discounts for children, students and members of motorhome clubs and federations
- ▶ special 50% discount for residents of partner cities

Exact location -50° 40'48.8"N 21° 45'17.8"E

Browarny Camping
ul. Żwirki i Wigury 1, 27-600 Sandomierz
+48 15-8332703, +48 604 403 869
skype: camping.browarny
wmajsak@poczta.fm

www.camping.majsak.pl



Sandomierz

Sandomierz is... a walk through narrow streets, among low-rise tenement houses and historic churches, a journey through the kingdom of senses. The taste of dishes prepared with local cheeses and fruits, the discreet beauty and optimism enchanted in striped flint jewellery will create a unique setting for your holiday. It is best to start visiting Sandomierz from an excellent vantage point, namely the Opatów Gate, from where you can admire the surrounding panorama. From there, you can see the medieval market square with the 14th century town hall and the 30 historic houses surrounding it. On the way to the Royal Castle, visit St Jacob's Church, one of the oldest brick churches in Poland. When visiting Sandomierz you must not miss the Cathedral Basilica of the Nativity of the Blessed Virgin Mary, which was built on the site of the original Romanesque collegiate church. In the immediate vicinity of the city there are charming ravines formed in loess soil. Among the most magnificent are the gorges of Queen Jadwiga and „Piszczele” [Tibia in Polish]. In Sandomierz, visiting the monuments of the past can also be combined with relaxation on the Vistula River, boat rides or angling. To delight your sense of taste, Sandomierz offers wines from local vineyards, delicious cheeses and sweet fruits and honeys. Sandomierz is also the capital of striped flint, the stone of optimism, which can be bought in the Old Town.

Świętokrzyskie City of Treasures - this is Opatów, famous for its historical monuments and regional sweet delicacies. When in town, make sure to take a walk to the Warsaw Gate and visit the Romanesque St Martin's Collegiate Church. Look out for the church and the Bernardine monastery as well as the market square with the town hall. In the market square there is an entrance to the Underground Tourist Route, which was created from a combination of cellars laboriously built over the years in the loess rock by Opatów merchants. The current tour is about 500 metres long and consists of three levels, the lowest of which reaches 14.5 metres below the surface of the square. There is a constant temperature underground, 8-12 degrees Celsius. Be sure to try Opatów sweets - Opatów fudge and doughnuts from the "U Szarego" patisserie.



Zawichost

A town on the outskirts of the province situated on the Vistula River. In the past it had strategic functions due to its location on the most important river in Poland. Today Zawichost is full of testimonies of its interesting history. The early Gothic church of St John the Bap-

tist and historic parish churches – the Baroque temples of the Assumption of the Blessed Virgin Mary and St Trinity - are worth seeing . It is worth noting the historic urban layout during a walk along the Vistula River.





Koprzywnica

Lying in the valley of the Koprzywnianka River, it gained its fame thanks to the Cistercians who once resided here. History has not been very kind to Koprzywnica, so the church and the complex of monastery buildings bear traces of numerous reconstructions and repairs carried out in accordance with

later architectural styles. Today you will see how impressive the cross-ribbed vault and the Gothic paintings in the church are. In the monastery part, the Romanesque chapter-house with a cross-vaulted ceiling deserves special attention.

Sandomierz Wine Route

Among the charming hills and valleys of the Kielce-Sandomierz Upland you will find vineyards producing some of the best wines in Poland. The vines that grow here every year provide the opportunity to produce wines with rich aromas and flavours. On the trail you

can visit the vineyards and wine cellars, learn about the secrets of viticulture and wine making, taste a total of several dozen wines, eat tasty snacks, and also stay for some time at a winery.





From Sandomierz to Góry Pieprzowe

Once you have visited the royal city of Sandomierz, explore its charming surroundings. Sandomierz is not just about monuments, churches and tenements. Situated in the middle of the land of loess gorges, the city also boasts stunning natural sights. So take the opportunity to enjoy a short trip to Góry Pieprzowe, or Pepper Mountains. Begin your walk in the Sandomierz market square. The red trail departs here toward Annopol, but you'll only walk 3 km because that's the distance you just need to cross to reach the charming Pepper Mountains. Sandomierz is located on a hill, so go down the stairs and follow the signs of the route until you reach the Vistula floodbanks. The gentle walk through along them ends at the old riverbed of the Vistula. Paths will lead you up the Pepper Mountains massif. From the top, you can

admire the view of the Vistula, Sandomierz, and the surrounding fields and meadows. These hills, also known as Pieprzówki, are built of Cambrian slate (a very old rock created about 500 million years ago), which in their colour and appearance resemble grains of black pepper. They are protected as a nature reserve, with numerous stands of xerothermic and steppe vegetation. Pepper Mountains are also called "Góry Różane", meaning "Rose Mountains". This area is considered to be the largest concentration of different species of wild roses found in Poland (out of 25 species that grow in Poland, as many as 12 have their habitat here). The most attractive period to admire them is in May and June when they flower, and the turn of summer and autumn, when the shrubs produce red fruit.





Bałtów CamperPark

The newly opened CamperPark in JuraPark - Bałtów Tourist Complex is the first of its kind in the Świętokrzyskie province and the whole country. And here is why it is so special...

FACILITIES:

- ▶ access to electricity and water (payable via a coin counter or card reader). The customer can access utilities when needed
- ▶ parking paid at the reception or at the ski lift ticket office
- ▶ service point for campers in transit, not planning to stay in the CamperPark

- ▶ two restaurants and sanitary facilities

- ▶ attractions located within a few hundred metres from CamperPark:

- in winter: ski lift, ice rink and Santa Claus Village

- in the summer: amusement park, Jura Park, canoeing, bike rental, horse riding

Check it out at:

www.juraparkbaltow.pl/atrakcje

www.baltowaktywnie.pl

www.szwajcariabaltowska.pl

Exact location - 51°00'53.3"N 21°32'59.1"E

CamperPark Bałtów
ul. Bałtów 170, 27-423 Bałtów,
+48 510 263 896
rezervacja.baltow@jurapark.pl

www.juraparkbaltow.pl/zaplanuj-wizyte/noclegi/camperpark-baltow



Bałtów

Bałtów has been famous for years as a place of entertainment for families with children - fun reigns supreme in the Bałtów Tourist Complex. In JuraPark Bałtów you will encounter almost 100 life-size models of dinosaurs built under the supervision of scientists and palaeontologists, and the Jurassic museum with numerous fossils. The Prehistoric Oceanarium and amusement park will provide plenty of excitement. It is also worth saying hello to the animals in Zwierzyniec. Sports enthusiasts will enjoy the "Bałtów Actively" offer. Here you can rent bicycles to take on the many cycling routes, or kayaks to float down the Kamienna River. All attractions offered by the Bałtów Tourist Complex can be found at: www.juraparkbaltow.pl



Krzemionki



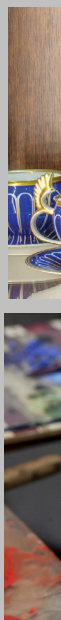
No one on their travels around the world will pass up a UNESCO-listed site. When in Poland, be sure to visit the Krzemionki Archaeological Museum and Reserve - a complex of prehistoric striped flint mines operating during the Neolithic and Early Bronze Age (about 3900 - 1600 BC). Did you know that this was the time when the Egyptian pyramids were built? Krzemionki is one of the largest and best-preserved sites of its kind in the

world and was added to the prestigious UNESCO list in 2019. Despite the passage of thousands of years, the underground mines have survived to the present day in an almost unchanged condition. In an archaeological reserve with an area of almost 350 ha you can see an exceptionally well-preserved mining landscape: mine tailings piles, shafts and perfectly reconstructed underground architecture from 5,000-4,000 years ago.

Living Porcelain Museum in Ćmielów

The Living Porcelain Museum invites you to take a trip into the world of porcelain. Here you will discover the secrets of porcelain production and its history, discover the world of art and design through touch, hearing, smell and learn by watching in real time how porcelain is made by hand. Or perhaps you will make it yourself in a ceramics workshop? Instead of a traditional guided tour, you are in for an adventure. An active tour of the Living

Porcelain Museum involves a guided walk through the entire process of producing a porcelain figurine "live". Participants witness how porcelain various wonders are made, including figurines, cups, mugs and others. In the factory shop at the AS Ćmielów Porcelain factory you can choose something for yourself from among 400 models of porcelain figurines, cups, mugs, vases, platters, and paintings.

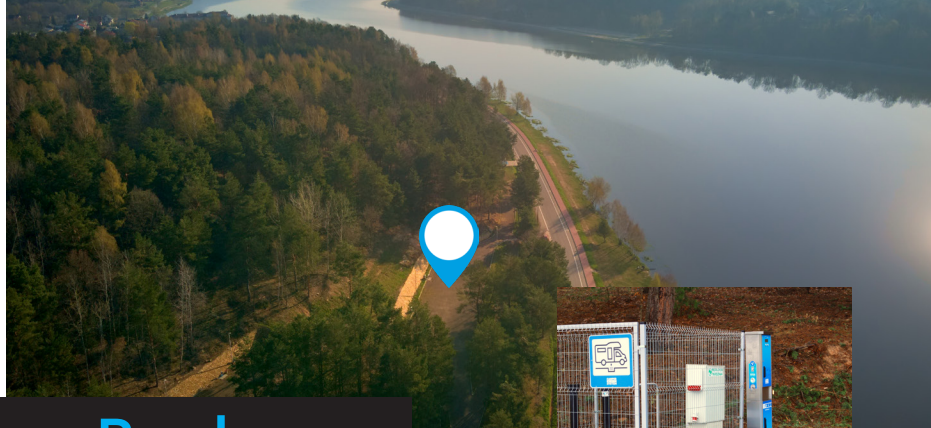




Ostrowiec Świętokrzyski is mainly associated with the metal industry. Today you can walk through the town park and the small historic centre. But we especially recommend visiting a testament to the city's former industrial splendour - the beautifully revitalised Ostrowiecki Browar Kultury. It is a building with soul, combining more than a hundred years of tradition with modernity. Today, the most important cultural institutions in Ostrowiec Świętokrzyski - the Municipal Public Library, the Ar-

tistic Exhibition Office and the Municipal Cultural Centre - operate here under one roof. The effect of this titanic work is particularly worth seeing in the evening when the illumination of the building casts spectacular shadows on its walls, and revealing numerous nooks and crannies and the texture of the bricks. It is worth coming here for a concert, an exhibition or just for something delicious at the "Changing Climate" café.





Brody CamperPark



At Brodzki Reservoir, in the Świętokrzyskie voivodship, a new campsite has been established with Camper System.

FACILITIES:

► pitches for campervans and motorhomes with access to electricity, water and sewage

professional service station for campers

► two playgrounds for children

► rope park, climbing wall

► volleyball court

► a grill shed and places for bonfires

► beach, water equipment rental

► cycling routes

► a paradise for anglers

Exact location - 51° 00'24.4"N 21° 10'22.2"E

www.brody.info.pl/uslugi-turystyczne.html

CamperPark Brody

Ruda, ul. Panoramiczna

+48 603 439 460, ct@brody.info.pl

Przystań Wodna Brody (Brody Harbour)

Brody is an ideal place for those seeking both a peaceful holiday and interesting experiences. There are excellent grounds for a variety of activities such as water sports, fishing, hiking or cycling.

Exact location - 50° 59'58.5"N 21° 10'11.2"E

www.przystanwodnabrody.pl

FACILITIES:

► cabins for 4 people with bathrooms

► hotel rooms

► campsite

► place for bonfire and/or barbecue

Przystań Wodna Brody

ul. Starachowicka 35

27-230 Brody

biuro@przystanwodnabrody.pl

Brody

A tourist centre in the northern part of the Świętokrzyskie province in the Brody municipality is a treat for sports and leisure enthusiasts but also for those who simply enjoy lying on the beach or taking a lazy stroll. Here you can take advantage of the offer of the tourist centre at the Brody Reservoir: a rope park, a street workout square, and cali-

sthenic training equipment (push-ups, lifts, acrobatics). At the reservoir you can rent a pedal boat or a canoe. Go for a walk to an atmospheric place - the natural monument "Rocks in Ruda". Note the historic stone water overflow in Brody from 1840 which is on the Świętokrzyskie Route of Industrial Monuments.





Wióry Reservoir and the ŚWIŚLINA VALLEY

educational path

The Świślina is a right tributary of the Kamienna River, and a portion of its valley between the popular Wióry reservoir and the northern edge of the village Doły Biskupie lies in the northern part of the Świętokrzyskie region. The view of the reservoir is really beautiful. A geo-tourist trail called “Świślina Valley” runs nearby. This area is very inte-

resting in terms of geology, as you can see a rock record of nearly 400 million years here. On a 5 km long stretch, you can admire rock layers from various ages: from Lower Devonian to Middle Triassic and Quaternary. Visitors can marvel at these exposed rocks as the subsequent stops of the geo-educational path.

Wąchock





Starachowice

A city with industrial traditions, whose greatest attraction is the Jan Pazdura Museum of Nature and Technology EKOMUZEUM. This is where industrial history stops being difficult. In the museum you will discover the secrets of the work of the blast furnace and see the famous Star Starachowice trucks (widely known trucks). There will also be an opportunity to learn about different species of dinosaurs at the pala-

eontological exhibition. The Blast Furnace Complex from the end of the 19th century is the most valuable element of the Museum of Nature and Technology. This is the only fully preserved technological line of metallurgical installations in Europe. The plant also includes one of the largest steam engines. It came to Starachowice from the General Industrial Exhibition in Paris which took place in 1899.

Cistercians from Wąchock are famous above all for their industriousness, as they have been responsible for the economic development of the area on the Kamienna River since the 12th century. The original Romanesque layout of the monastery complex has been preserved to the present day. In later years, the monastery complex was rebuilt several times. Lovers of sacral architecture who come here can admire the Late Romanesque monaste-

ry church, built on the plan of a Latin cross from two-coloured stone blocks, and the monastery with perfectly preserved Romanesque interiors, with a beautiful chapter-house which is a masterpiece of exceptional value for the Cistercians in Poland. The Cistercian Abbey in Wąchock is one of the most important sites on the European cultural routes known as the Cistercian and Romanesque Routes.



140 Camping Suchedniów

140 Camping is located in the heart of Suchedniów by a reservoir. The campsite is surrounded by forest. The history of the region is related to the Polish struggle for independence. Nearby access to trails, walking paths and attractive routes for bikers make it an excellent base for excursions in the Świętokrzyskie Mountains. Within an hour drive, you can reach Święta Katarzyna, Nowa Słupia, Świętego Krzyża, Wąchock, Chęciny, Raj Cave and many other sights. We have been officially recommended as a bikerfriendly place (MPR - Miejsce Przyjazne Rowerzystom) on the Green Velo Eastern Cycling Route.

FACILITIES:

- ▶ all-year-round camping
- ▶ cabins and guest rooms
- ▶ in summer - guarded swimming pool and water sports equipment rental: pedal boats, canoes and rowboats

canoes and rowboats

- ▶ fishing opportunities
- ▶ football table
- ▶ beach football pitch
- ▶ tennis courts
- ▶ children's playground
- ▶ table tennis

▶ outdoor gym

- ▶ sauna
- ▶ fireplace and grill
- ▶ Wi-Fi for guests
- ▶ common room with TV

Exact location - N 51°02'29" E 20°50'32"

Ośrodek Sportu i Rekreacji
ul. Ogrodowa 11, 26-130 Suchedniów
+48 41 25 43 351; +48 518 336 751
repcja@osirsuchedniow.pl


 An aerial photograph of a campsite in Suchedniów. The campsite is situated on a grassy field next to a river. Numerous tents and campers are visible, along with several cars parked. The background is a dense forest.

Suchedniów

This development of this small town situated in the middle of forests was tied to the Old-Polish Industrial Region. Today it is worth seeing the church of St Andrew the Apostle, erected in 1758 with support from the foundation of Andrzej Załuski, the bishop of Kraków. There is an early Baroque altar in the church. The individual build-

ings of Suchedniów are interesting (especially the manor houses). Among them stands out the stylish shingled manor house, the so-called "Kałamarzyk" from the 19th century. Only 3 km from Suchedniów there is a mill in the village of Jędrów on the Industrial Monuments Route.


 An aerial photograph of Bliżyn. The image shows a winding river, a paved path, and some buildings. The word "Bliżyn" is overlaid in large white letters.

Bliżyn

Bliżyn, a small locality near Skarżysko-Kamienna, hosted a very important person in June 1410, the Polish king Władysław Jagiełło, who stopped here for a night during his journey to Grunwald, the site of a battle with the Teutonic Knights. At present, it is a small village on the Świętokrzyskie Route of Wooden Architecture where the larch chapel of St Sophia, completed in 1818, stands out. Apart from the chapel, you can see the ruins of a 19th-century steelworks, the neo-Gothic palace of the Plater family and the parish church of St Ludwik from 1896.

Skarżysko-Kamienna

Another town in the Świętokrzyskie region whose fate and development were associated with the Old-Polish Industrial Region. Here, in the valley of the Kamienna River, industry developed thanks to the treasures hidden in the earth, in particular, metal ores. Today, Rejów - the most beautiful historic district of Skarżysko-Kamienna - is home to a dyke, culverted canals and the remains of a blast furnace, a testament to the area's metallurgical past and development. The most frequented industrial monument in the town is

the White Eagle Museum located in the brick building of the former watchtower of the steelworks and in the square. It is the second largest military museum in Poland in terms of size and number of exhibits. It also contains rooms with interesting exhibits from other areas of Skarżysko-Kamienna's history. The Sanctuary of Our Lady of the Dawn Gate is worth a visit. In 1989, the Skarżysko Gate of Dawn was founded here, following the example of the Vilnius shrine of Our Lady of the Dawn Gate.





The village is known for the cruel pacification carried out by the Nazis during World War II. At least 204 inhabitants were killed during this pacification - most of them burned alive! In order to commemorate this difficult time in history, in the 1990s a Mausoleum of Martyrdom of Polish Villages was built in Michniów. Today you can visit the new

facility built according to the design of Mirosław Nizio, an architect known in Poland and abroad. The mausoleum, opened in 2021, is a monolithic block presenting the history of the pacification of Michniów and the martyrdom of other villages. The exhibition uses modern multimedia: screens, projectors, and touch panels.



A little town on the western side of the Swietokrzyski National Park on the Psarka River. Today, after many turns of fate, the picturesque ruins of the castle of the Bishops of Kraków are an important monument in Bodzentyn. The former castle was rebuilt several times, changing its function from defence to residence. High walls with window openings and a 17th century portal made of red sandstone have been preserved. The second of the most

valuable buildings in Bodzentyn is the Gothic church, the Collegiate Church of the Assumption of the Blessed Virgin Mary and St Stanisław. In the rich interiors of the temple you can see paintings which are important for the history of Poland: a triptych from Bodzentyn from the beginning of the 16th century and a Renaissance altar painted in 1546 by order of King Zygmunt Stary for the Wawel Cathedral as the main altar.



Jol-Kamper-Sielpia

campsite and camperpark

We offer one- or multi-day stays, depending on your preferences.

On our campsite, you can park your camper, a motorhome or put up a tent.

We also have full sanitary facilities - clean, neat bathrooms, showers and toilets. A football pitch, a gym and a playground for children can be found at a 100-metre distance. There is a grocery shop right next door. We are open from 1 May to 30 September.

FACILITIES:

- ▶ clean and neat bathrooms, showers and toilets
- ▶ available power mains connection
- ▶ hot water available 24 hours a day
- ▶ grey water discharge from campers

- ▶ a designated place for cleaning cassettes and waste containers
- ▶ a large gazebo suitable for barbecue
- ▶ football pitch
- ▶ gym
- ▶ playground

Exact location -51° 06'45.1"N 20° 20'55.3"E



Sielpia

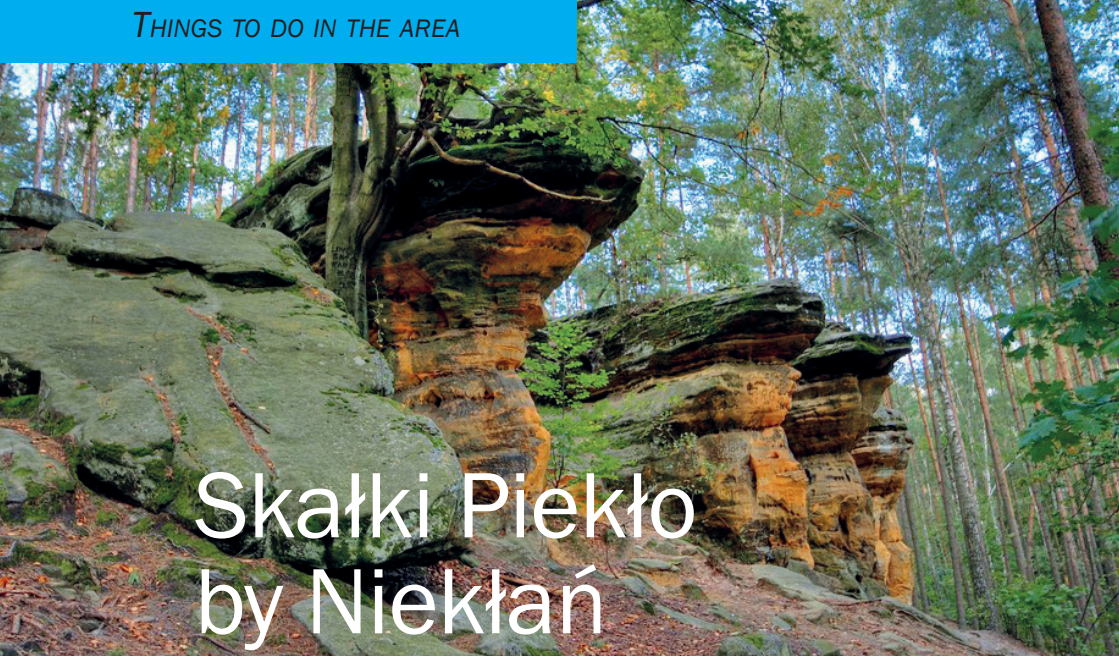
Sielpia is the biggest holiday centre in the Świętokrzyskie province, where you can relax by the water among forests full of conifers. The recreational reservoir in Sielpia on the Czarna Konecka River is very popular with locals and

tourists. In the summer season it becomes a public swimming pool with many water attractions. There are hiking and cycling trails and Nordic Walking paths in the area.

Końskie



Nestled among forests, Końskie is a perfect town for leisurely strolls. In Końskie, you will stroll through the palace and park complex, the construction of which was initiated in the 18th century by the Great Crown Chancellor Jan Małachowski - the former owner of Końskie and the estate called "Końskie Wielkie". Eventually, after many additions, the complex came to consist of the wings of Małachowski Palace together with pavilions, a gloriolite, a Greek temple, an Egyptian orangery, a gazebo, a chapel, a "grandchildren's house", a fence with towers, and the park itself with old trees. The Church of St Nicholas in the town centre is also worth a visit.



Skałki Piekło by Niekłań

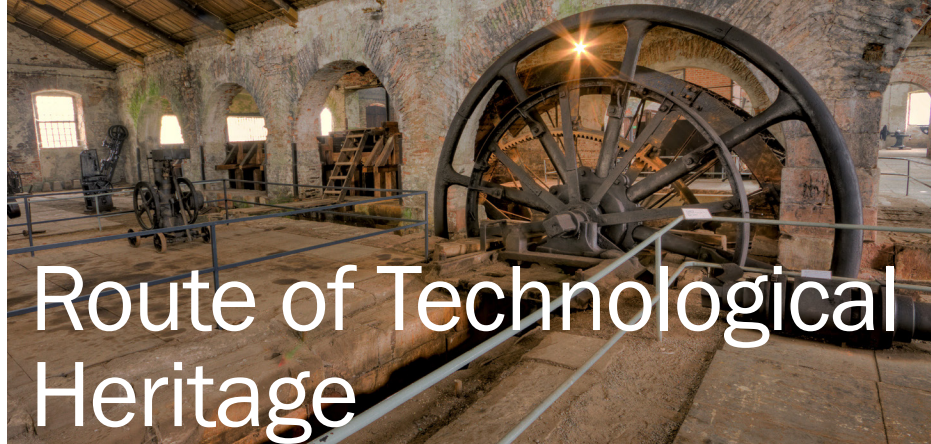
One of the most interesting and intriguing reserves in the Świętokrzyskie region! Skałki Piekło by Niekłań are a place perfect for long walks at any time of the year. Here you can see rocks which were carved by erosion processes in the Triassic and Lower Jurassic sandstones. Their fancy shapes will

stimulate your imagination. Take a look at a series of monadnocks taking on unusual shapes such as rock mushrooms, chimneys or cascades, reaching heights of 2 to 8 metres! The fantastic forms and their dark colouring were probably the origin of many legends and the name of this place.

Gagaty Sołtykowskie



Millions of years ago, an interesting scene from the life of dinosaurs took place in the now peaceful Gagaty Sołtykowskie. How do we know this? For example, the perfectly visible footprints of predatory theropods which hunted and surrounded herbivorous sauropods are the first clue. And there are many more tracks imprinted in the rocks of the present reserve. An additional curiosity is a discovery made in the mid-1970s when one of the major geological wonders of the region - a gagate - was identified.



Route of Technological Heritage

Steelworks, furnaces, factories - witnesses to the economic power of Poland concentrated in the Old-Polish Industrial Region and the Central Industrial District. These industrial treasures from centuries gone by (17th-20th centuries) have been transformed into vibrant museums and lively cultural centres. And some have become ro-

mantic ruins integrated into the surrounding landscape. They are now Świętokrzyskie Monuments of Technology... You should not forget about any of these facilities, which is why we invite you to join us on the 200 km long car route – the Świętokrzyski Route of Industrial Monuments, where you can visit 18 historic monuments.



Historical Metallurgical Plant in Maleniec

The 200-year-old historic complex of a rolling mill and nail mill located on the banks of the Czarna River in the small village of Maleniec looks as if the workers have just left it for a short break. You can now follow a route that takes you through the various buildings and amongst machinery of the industrial plant in Maleniec (19th-20th century). In its prime days, 15 nailing machines

were installed here for the production of cut sheet metal nails. After the factory was modernised, the production of shovels, spades and construction fittings began. The machines were set in motion by three water wheels moving a system of conveyor belts which then ran presses, nailers, shears, hammers and heating furnace bellows.



"Uroczysko"

Camping and Resort

"Uroczysko" is a seasonal resort operating from April through September located in the Świętokrzyskie Mountains. The facility is surrounded by a natural forest complex. In the vicinity, a picturesque reservoir with a bathing beach separates it from the village of Borków, just on the opposite side of the water body. On the vast resort area of 2 ha, many attractions await you. We welcome you from 7:00 to 22:00.

FACILITIES:

- ▶ campsite for approximately 50 units
- ▶ extensive grounds for tents (for approximately 30 units)
- ▶ access to power mains
- ▶ waste disposal site
- ▶ freestanding modular toilets
- ▶ affordable accommodation in high-standard cabins and rooms with private bathrooms or rooms with shared sanitary facilities
- ▶ summer swimming pools (large and small)
- ▶ playground
- ▶ children's zone and many other attractions

Exact location - 50.776458, 20.764086

www.uroczysko-borkow.pl

"Uroczysko" Camping and Resort
Słupiec Rządowy 43, 26-021 Daleszyce
+48 606 442 256
kontakt.uroczysko@gmail.com



Borków

A holiday resort situated near Cisow-sko-Orłowiński Landscape Park. The shores of the 36-hectare artificial lake contain the most beautiful bathing area in the region, with numerous attractions (ropes course, airball, climbing wall, paintball) The clean beach, pier and water equipment rental services (boats, canoes, water bikes) make

the place one of the region's most popular holiday destinations for water lovers.

Fishing enthusiasts can be sure to catch a pike, a perch or a pikeperch. There is also a horse riding centre, and numerous tourist trails. The well-developed accommodation and food services enable a longer stay.

Kielce

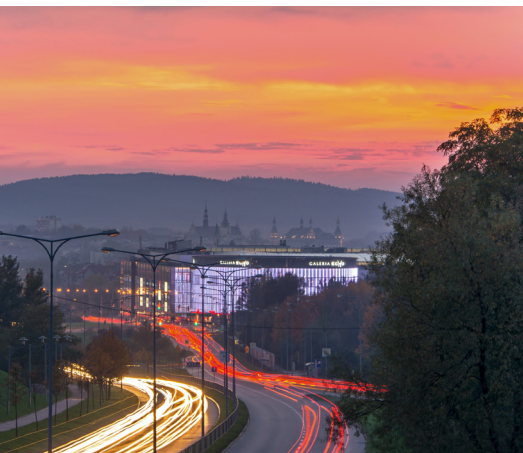


Kielce is the capital of the Świętokrzyskie Voivodeship, surrounded on almost all sides by large forest complexes and ranges of the Świętokrzyskie Mountains. It is also the only city in Poland and in Europe which has 5 nature reserves within its boundaries: four geological reserves – Kadzielnia, Wietrznia, Biesak-Białogon, Ślichowice and one landscape reserve – Karczówka. In addition, the city boasts the Kielecko-Chęciński Landscape Park where most of the recreational areas are located, including the Botanical

Garden, walking paths, hiking and biking trails, ski lifts, a cross-country ski slope, and even horse-riding centres. The big distance from industrial plants, the huge number of green areas and the Świętokrzyskie Mountains (e.g. Kazielniańskie, Dymińskie or Połowickie Range lying within the boundaries of Kielce) guarantee effective rest and provide many opportunities for active tourism.

Kielce, in addition to its outstanding natural features, can boast valuable cultural assets and perfectly preserved monuments. Tourists will undoubtedly be delighted by Castle Hill and the cathedral, the Palace of the Bishops of Kraków and the Centre of Patriotic and Civic Thought in the former Kielce prison, the Museum of Toys and Play with a vast collection of toys or the picturesque post-Bernardine monastery complex in Karczówka.

Cultural institutions such as cinemas, galleries, theatres (dramatic, puppet and dance), and the only philharmonic in the region are sure to provide a wide variety of artistic impressions and emotions. Lovers of good cuisine, atmospheric cafes, pubs and entertainment until dawn will also find a number of places to choose from.



THINGS TO DO IN THE AREA





"Pod Zamkiem" campsite

Our campsite offers cheap accommodation in Chęciny, in the Świętokrzyskie Mountains. The facility is located only 150 metres from the royal castle in Chęciny (the symbolic landmark of the region), which is one of the most famous and most visited tourist attractions of the Świętokrzyskie Mountains and the whole Świętokrzyskie province. We also welcome motorised guests – with motorhomes or campers. We will be happy to suggest what to see in the neighbourhood and can also recommend a local guide who will show you around the castle, the town and the region. In the shop, you can buy regional souvenirs, maps and guide books. There is also a small catering service.

Looking forward to having you!!!

FACILITIES:

- ▶ full sanitary facilities (toilet, shower)
- ▶ power connection available
- ▶ place for barbecue, campfire
- ▶ space for playing ball and games

Pole namiotowe (tent campsite)
"Pod zamkiem" w Chęcinach
ul. Jędrzejowska, 26-060 Chęciny
+48 881 251 786; olgapio@poczta.fm

Exact location - 50° 47' 53.1"N 20° 27' 25.9"E

Chęciny

The monumental building resembling a ship on the rock is a witness to the roar of cannons during wartime turmoil, ceremonial feasts in honour of kings and queens, and long fairs in Chęciny. The Royal Castle in Chęciny was built at the turn of the 13th and 14th centuries on a hill (360 m above sea level) as an upland-type fortress. Over the years it was visited by kings, queens and the most distinguished guests.

The castle is divided into two parts: the upper, older one, stretching between two round towers, and the lower, younger one, distinguished by a quadrilateral tower which was added in the 15th century. In the upper castle you can visit the treasury and climb the highest tower. The lower castle had an economic function. In the middle of its courtyard there is a well, carved into the rock to a depth of 100 m.





“Raj” Cave

One of the most beautiful dripstone caves in Poland and one of the greatest treasures of our region. The very name "Raj" [Paradise] testifies to its beautiful dripstone decoration. The 180-metre-long tourist route is only accessible under the supervision of a guide. You start with an exhibition that introduces you to the fascinating world of caves

in which you will find out what karst is. You will learn to distinguish between a stalactite and a stalagmite. In the cave, you can feel its specific microclimate - high humidity and a constant air temperature of about 9 degrees Celsius persist all year round - regardless of the time or season.

Tokarnia

If you want to feel the atmosphere of the fragrant Polish countryside, come to the Ethnographic Park in Tokarnia. Here time stood still in the 19th and 20th centuries. Wooden houses await residents who have left for work. It seems as if a small-town pharmacist has gone into the back room for a while, and a miller has gone to get grain

for flour... The Ethnographic Park in Tokarnia is an open-air ethnographic museum presenting objects in natural settlement complexes, fragments of villages where farmsteads used to work together with rural industry objects, such as a mill, windmill or blacksmith's shop.





Leonardo da Vinci Science Centre

in Podzamcze Chęcińskie

At the da Vinci Centre you will learn about the secrets of the human body by using interactive stations in the building and garden. The theme of the exhibition is the healthy human organism - a well-functioning human body that keeps you physically and mentally fit. During the tour you can learn how complex and demanding the human

body is. You will see the five human life activities (breathing, heartbeat, response to stimuli, maintenance of upright body posture, and nutrition) that keep the body in a state of biological balance. The exhibition consists of many multimedia and mechatronic stands.

The Świętokrzyskie Geopark in the UNESCO network of Geoparks

Formerly picturesque quarries, now under the care of the Świętokrzyskie Geopark, are tourist treasures of our region, listed as UNESCO Geoparks. These treasures can be found in an area of 5 neighbouring municipalities: Kielce, Chęciny, Morawica, Sitkówka, and Piekoszów. Those include, above all, exposures of Middle and Upper

Devonian limestone, dolomite and marl which are a geological reminder of the shallow seas of 360 million years ago. In addition to geological curiosities, you will find natural treasures and many historic monuments testifying to the intense human activity in this area over the centuries.



"Podkowa"

Camp&Rest in Gacki

"Podkowa" Camp & Rest in Gacki is a private property situated directly on the Podkowa Lake.

It is located in a picturesque place - a small, peaceful village of Gacki, just between the towns of Pińczów and Busko-Zdrój, in Świętokrzyskie Voivodship in Ponidzie.

The village is located far from cities and crowds, thus ideal for those who appreciate spending time in nature and rest in silence. It is also a great choice for anglers with families.

Fence, monitoring and guards guarantee safety of all guests on premises. We look forward to welcome anyone willing to have a quiet rest on our campsite, a perfect base to discover the area.

FACILITIES:

- ▶ private clean beach with a shallow descent to the water
- ▶ clean water in a sulphur-containing lake
- ▶ playground for children

- ▶ fireplace
- ▶ tent and camping site
- ▶ dishwashing station
- ▶ drainage point for dirty and grey water
- ▶ toilets with running water free of charge
- ▶ access to sanitary and power facilities

Exact location - 50°27'27.4"N 20°35'08.6"E

www.campgacki.pl

Camp&Rest Gacki
Gacki, 28-400 Pińczów
+48 509 156 542



Loch Ness Camping

Loch Ness is a camping site for families and seniors, offering ideal conditions for a summer holiday. The campground, situated in a wooded and grassy area, provides a great opportunity for leisure. Loch Ness campsite is fully fenced and guarded. We offer direct access to a reservoir and a beach. The water scores 1st class in a cleanliness rating and is fed by underground springs containing medicinal sulphur, which are regularly inspected by the sanitary services. It's been a tradition for nearly 30 years now that we also offer a Quiet Camping zone for anyone looking for peace and quiet.

FACILITIES:

- ▶ sanitary facility
- ▶ catering building
- ▶ summer kitchen
- ▶ volleyball court

- ▶ benches
- ▶ barbecues
- ▶ summer common room
- ▶ other amenities available in the centre



Exact location - 50° 27' 13.09" N 20° 35' 06.67" E

Loch Ness - camping
Gacki, 28-400 Pińczów
+48 604 147 334; biwak@op.pl

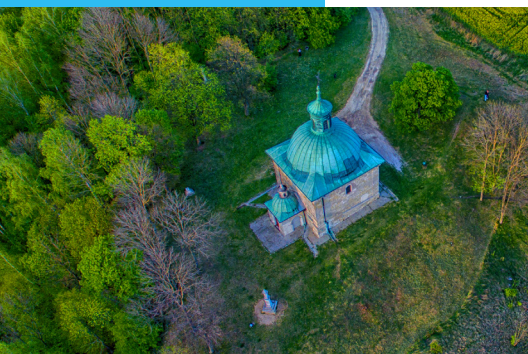
www.lochness.com.pl



Pińczów

Pińczów is a small town situated on the banks of the Nida River flowing through vast meadows to the Vistula River. History has given the town a colourful past, which is attested by numerous valuable architectural monuments. You can admire the panorama of Pińczów from St Anne's Mountain and the Renaissance Chapel of the same saint. The view of the town and the meandering Nida River is calming and inspires you to continue exploring the town. There is the Regional Museum, which

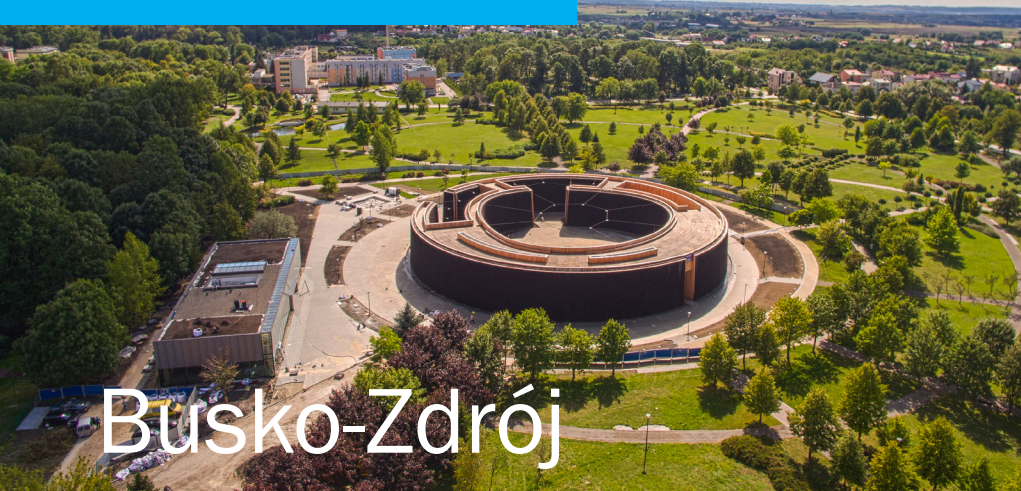
presents the history of Pińczów and its surroundings, and the synagogue - a pearl among the Jewish architecture in Poland - one of the oldest surviving monuments of Old Jewish culture which testifies to its richness. Lovers of sacral architecture will find here the former Pauline monastery complex, located at the corner of the square, and the Reformati monastery complex in Mirów. The lagoon on the Nida River in the southern part of the town is also worth a stroll.



Wiślica

Situated on the gypsum hills on the Nida River in the south of the voivodeship, this town was once one of the most important urban centres in Małopolska (Lesser Poland). Today, it is considered one huge historic monument. According to the legend describing the work of the saints Cyril and Methodius in the land of the Vistulans, a “pagan prince, sitting strong on the Vistula” was forcibly baptised by the ruler of the Great Moravia. Some people consider the gypsum bowl found in Wiślica, with a diameter of about 4.5 m, as the first baptismal font. However, most scientists now interpret it as a simple niche used to prepare building mortar. A collegiate church erected by King Kazimierz the Great towers over the town. Thanks to the Romanesque-Gothic statue of the Blessed Virgin Mary from 1300, commonly known as Madonna Łokietkowa, the church functions as the Sanctuary of Our Lady of Wiślica. Under the floor of the Gothic church, remnants of two Romanesque churches dating from the 12th and 13th centuries were found along with a famous decorative floor plate, dubbed “the Slab of Orants”, dating from 1170. In 1347, the so-called Statutes of Wiślica were published in this town, as the first Polish codification of the law. Other places worth stopping at are the house of the famous chronicler Jan Długosz (from 1460) and the Gothic bell tower.





Busko-Zdrój

This sunniest city in Poland lies in the very heart of Poniżanie. The sulphurous water found here gave rise to one of Poland's most famous spas, and the beautiful scenery has certainly inspired and influenced many artists. Among the numerous spas, Busko-Zdrój Spa with its historic Marconi Sanatorium in the Spa Park - the natural heart of Busko-Zdrój - reigns supreme. Currently, a brine graduation tower, one of the largest and most modern in Poland, is the most popular place in Busko. The impressive structure is circular in shape with a diameter of about 72 m and

a circumference of about 226 m, and the walls are nearly 10 m high. The graduation tower consists of two rings of blackthorn which are separated by labyrinth-like passages. These lead into a courtyard, at the heart of which there is a mist fountain. It can serve additional functions, as its size allows it to host cultural events and activities. At the top of the graduation tower, there is an observation deck from which you can enjoy a beautiful panoramic view of the spa. There is a bicycle rental service next to the graduation tower.

Ogród na Rozstajach

[Garden at the Crossroads]

Six kilometres from Pińczów, in Młodzawy Małe, you can stroll through the unusual "Ogród na Rozstajach" founded by the artist-sculptor Tadeusz Kurczyna. You will encounter a fairy-tale landscape here - a waterfall several metres high, a cave, ponds and coun-

tless flowers and bushes, all spread out over three levels. The garden is inhabited by white and black swans, black stork, different kinds of ducks, peacocks, parrots. Numerous ponds are inhabited by colourful fish.



Świętokrzyskie CamperTeam

ŚWIĘTOKRZYSKIE CamperTeam is an open group of local motorhome enthusiasts, people who identify with this region, and all those who feel comfortable in our group. We are a group of free travellers.

We organise one of the biggest caravanning events in Poland - Piknik Rodzinny CamperTeam (The CamperTeam Family Picnic), which takes place every year at the end of May and the beginning of June on the grounds of the Bałtów Tourist Complex.

CONTACT:



Regional Tourist Information Centre

ul. Sienkiewicza 29
25-007 Kielce
+48 41 348 00 60
informacja@swietokrzyskie.travel
www.swietokrzyskie.travel/en

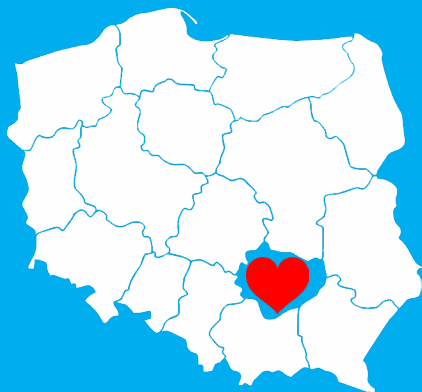


Świętokrzyskie take it slow!

camping / camperpark / campsite



www.swietokrzyskie.travel/en



Text and publishing by:

Regional Tourist Organization
of the Świętokrzyskie Province
ul. Sienkiewicza 78, IVp/2, 25-501 Kielce
tel: +48 41 361 80 57,
www.rot.swietokrzyskie.travel

ROT
Świętokrzyskie

Translation:

Translation Street, Rydlówka 20, 30-363 Kraków
tel. +48 12 362 60 00, e-mail: biuro@translationstreet.pl

Composition and design:

MediaNocka, ul. Warszawska 191B, 25-551 Kielce
tel. +48 515 062 077, e-mail: medianocka@gmail.com